

Photographic & Measurement Comparison

Combat Application

Tourniquet (GEN III vs. E-CAT)

CAT (GEN III) vs. F-CAT

Executive Summary

Executive Summary

Introduction:

1. The Element Cat (E-CAT) is a very carefully made counterfeit CAT tourniquet.
2. It is manufactured in Hong Kong for \$8.50 (USD) per item.
3. There are no limits to the number that can be purchased.
4. They are available on the internet, and anyone can purchase them.
5. They were designed to look, feel and act like a CAT (GEN III).
6. They ARE a counterfeit tourniquet.

How can you tell the difference?

1. Once you know what to look for, it is easy to tell the difference between the two tourniquets.
2. However, a novice would easily mistake the “Fake” for the real CAT (GEN III).

Executive Summary

Differences on the Windlass:

1. The CAT (GEN VI) with the thicker windlass is much easier to identify and differentiate between the CAT GEN VI and the E-CAT.
2. The CAT (GEN III) windlass looks exactly like the E-CAT windlass. They are the exact length, nearly the same thickness at all measurable points:
3. The E-CAT windlass will fold back on itself without breaking; however, you cannot tighten the tourniquet with it.
4. The CAT (GEN III) cannot be flexed. The composite used in its manufacturing is ridged, and will break with excessive force. However, it will tighten the tourniquet.
5. Mold marks on the E-CAT are 2mm windlass are smaller than on the (CAT GEN III) windlass at 5mm. (Photo Slides follow)

Executive Summary

Differences on the Chassis:

1. The CAT (GEN III) and the E-CAT have identical dimension chassis and component parts.
2. There are only slight differences in the thickness of the composite material.
3. The composite material on the E-CAT is very soft and pliable.
4. The composite on the CAT (GEN III) will flex, but it is more rigid, and durable. It can fail when stress too far.
5. The marking on the counterfeit (E-CAT) are identical to the CAT (GEN III)
6. Mold marks:
 1. On the back of the chassis there are four mold marks on both units.
 2. On the back of the CAT (GEN III) the mold marks are all 5mm in diameter.
 3. On the back of the E-CAT the mold marks are 4mm in diameter

Executive Summary

Differences on the Buckle:

1. The CAT (GEN III) and the E-CAT have nearly identical dimension buckles.
2. See the photographs (following) to illustrate the subtle differences.
3. The E-CAT has slightly squared corners on the buckle.
4. The E-CAT has (6) mold marks on the back of the buckle. (2) on the center bar, and (2) on each of two outside bars.
5. The CAT (GEN III) is more rounded on the corners of the buckle.
6. The CAT (GEN III) has (6) mold marks on the back of the buckle. (3) on each of the outside bars.

Executive Summary

Differences in the Webbing material:

1. The CAT (GEN III) and the E-CAT have nearly identical width and thickness of nylon webbing.
2. See the photographs (following) to illustrate the subtle differences.
3. The E-CAT is stitched all around.
4. The E-CAT does not use any heat welding (appear as “dots” on the webbing)
5. The CAT (GEN III) is stitched, but also relies on heat welding in some spots.
6. The CAT (GEN III) has a date (M/D/Y) stamped in white toward the tip of the tourniquet (nylon).
7. The adjustment webbing is identical width and length for both tourniquets.

Executive Summary

How to find the FAKE CAT:

1. Stitching only (no heat welding spots)
2. Back of buckle has (6) 3mm mold marks:
 - a. 2 on the lateral bar.
 - b. 2 on the center bar.
 - c. 2 on the (other) lateral bar.
3. No markings (M/D/Y) on the tourniquet.
4. Mold marks on windlass are small, only 3mm.
5. Windlass is very flexible, bends and then snaps back.
6. The hook and loop used to secure the windlass into the windlass lock will likely drop off the windlass lock—the glue is dry and does not hold.

Measurements

	Chassis (Thickness)	C-Buckle Width (1 st) bar	C-Buckle Width (2 nd) bar	Windlass Hook (Bottom)	Windlass Hook (Left)	Windlass Hook (Right)	Windlass (Center)	Windlass (L-End)	Windlass (R-End)	Front Buckle (Center)	Thread Tear (ft lbs)
GEN III CAT	1.70mm	3.6mm	6.1mm	1.71mm	1.75mm	1.73mm	9.09mm	9.27mm	9.36mm	1.67mm	11.9 lbs
E-CAT	1.68mm	3.92mm	6.20mm	1.73mm	1.92mm	1.93mm	9.01mm	9.17mm	9.28mm	1.75mm	28 lbs
GEN VI CAT	1.73mm	3.77mm	3.83mm	2.25mm	2.38mm	2.37mm	11.33mm	9.34mm	9.32mm	1.71mm	12.5 lbs

*Note: there is no measurable difference between

- 1.The length of the windlass for (GEN III and E-CAT), both are 14.8cm.
- 2.Chassis length is 9.0cm for both.
- 3.Chassis width is 3.8cm for both
- 4.Length of the tourniquets are the same.
- 5.Width of the nylon webbing is 3.8cm for both.
- 6.Width of the adjustment webbing is 2.5cm for both.

E-CAT



CAT (GEN III)



CAT (GEN III) vs. E-CAT

Package Comparison

CAT (GEN III) vs. E-CAT

CAT (GEN III)

Package from NARP, Inc.
Looks nothing like the F-CAT package.

E-CAT:

Packaged in plastic bag with paper top.

The sticker on the bag call the tourniquet the "Combat Application Tourniquet" and lists the NSN assigned to NARP.

CAT (GEN III) vs. E-CAT

Chassis Comparison

Chassis Comparison

The CAT Composite Part (Assembly)

Chassis

Buckle

CAT (GEN III)

C-III

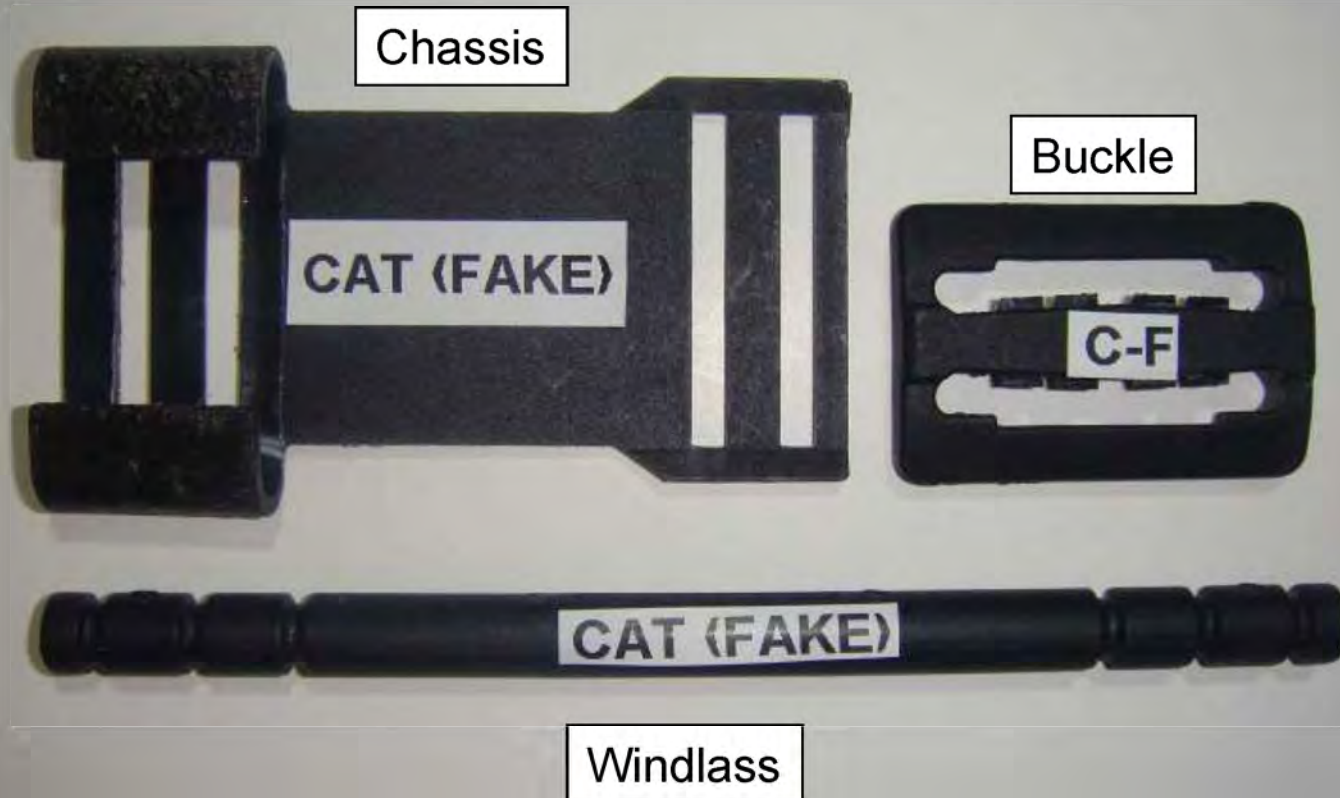
CAT (GEN III)

Windlass



Chassis Comparison

The E CAT Composite Part (Assembly)



CAT (GEN III) vs. E-CAT

Front bars are the same

Back bars are the same

Mold marks on
CAT (GEN III) are
5mm in diameter



CAT (GEN III) vs. E-CAT

E-CAT



Notice the only discriminator is the size of the mold marks on the back of chassis

CAT (GEN III) vs. E-CAT

Notice mold marks (again)

3mm on E-CAT

5mm on CAT (GEN III)



Notice E-CAT
windlass lock is
misshapen and
slightly thinner.



CAT (GEN III) vs. E-CAT

E-CAT

Slightly
misshapen,
weaker
composite.



CAT (GEN III)

Stronger more
uniform
composite.



Chassis Comparison

Windlass Lock (end view)

E-CAT

CAT (GEN VI)

CAT (GEN III)



CAT GEN III vs. E-CAT

Buckle Comparison

CAT (GEN III) vs. E-
CAT

CAT (GEN III)
Buckle (Back)

CAT (GEN III)
Buckle (Front)

CAT (GEN III) vs. E-
CAT

F-CAT
Buckle
(Back)

Buckle
(Front)

CAT (GEN III) vs. E-CAT

E-CAT

Different composite (more grainy). Slightly squared corners.



CAT (GEN III)

Different composite (more shinny). Slightly rounded corners.



CAT (GEN III) vs. E-CAT

E-CAT

Slightly more squared corners and mold marks on center bar.

CAT (GEN III)

Notice slightly more rounded corners and ALL mold marks on the outside.



CAT (GEN III) vs. E-CAT

Windlass Comparison

Windlass Comparison

Identical to the casual observer



Windlass Comparison



Windlass Comparison

CAT (GEN III) mold mark is 5mm



E-CAT mold mark is 3mm

Windlass Comparison

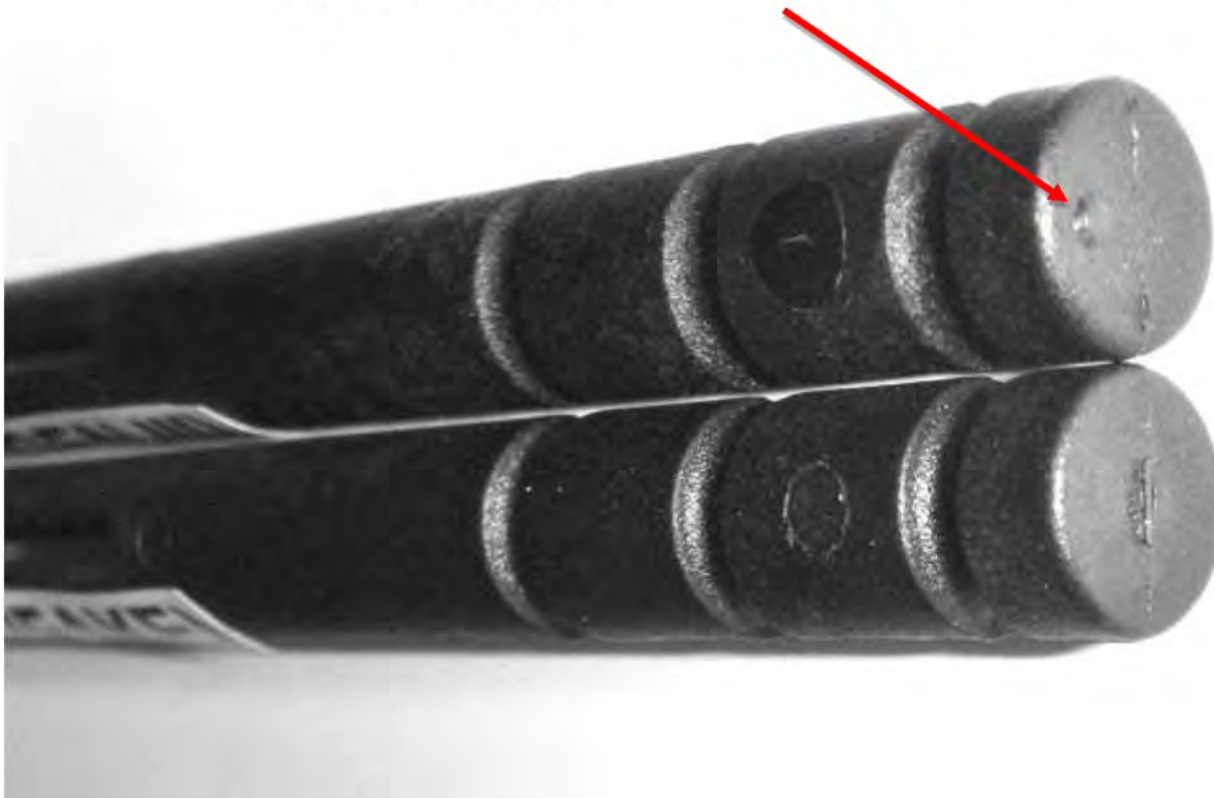
CAT (GEN III) mold mark is 5mm



E-CAT mold mark is 3mm

Windlass Comparison

Small 2mm mold mark on CAT (GEN III)
End of windlass

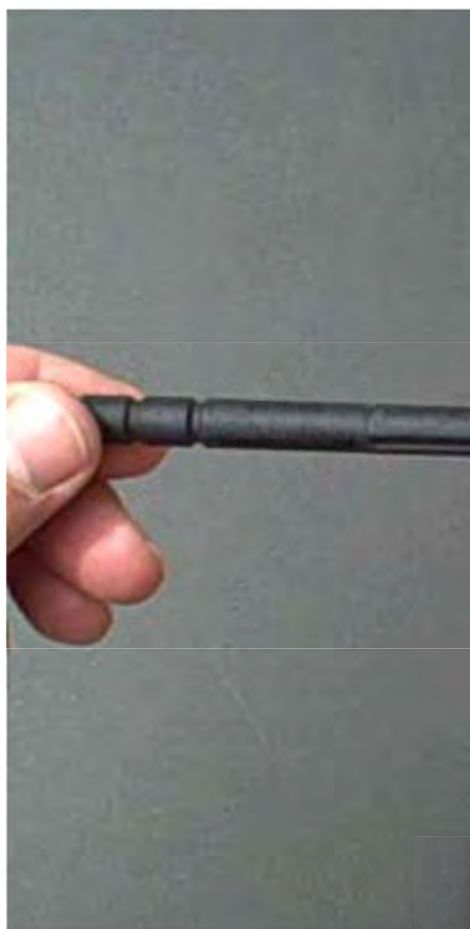


Windlass Comparison

E-CAT



Windlass Con



CAT (GEN III) vs. E-CAT

Stitching Comparison

Stitching Comparison



E-CAT has no markings on the webbing

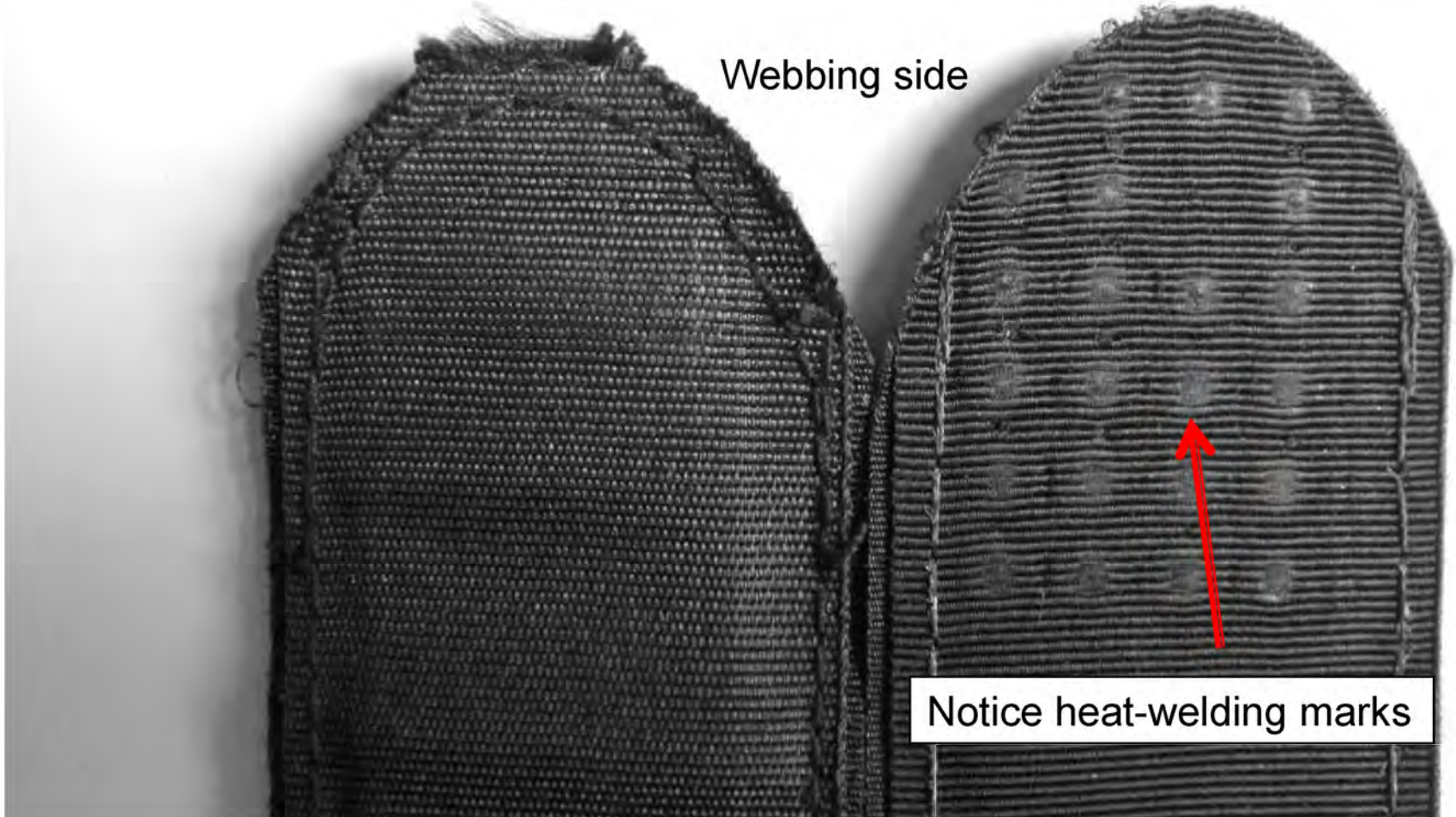
CAT (GEN III) has date stamped on webbing

Stitching Comparison

E-CAT

CAT (GEN III)

Webbing side



Notice heat-welding marks

Stitching Comparison

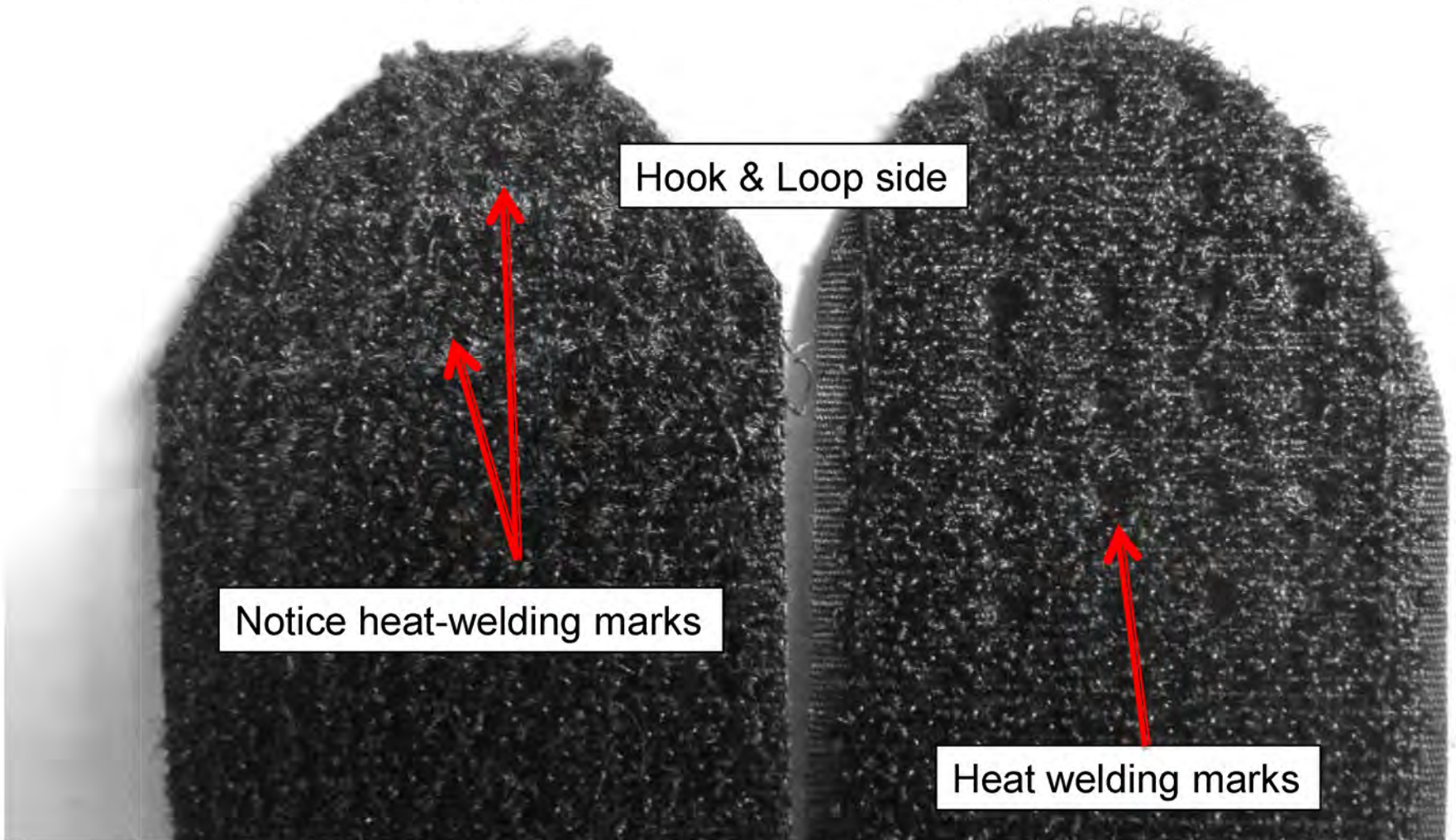
E-CAT

CAT (GEN III)

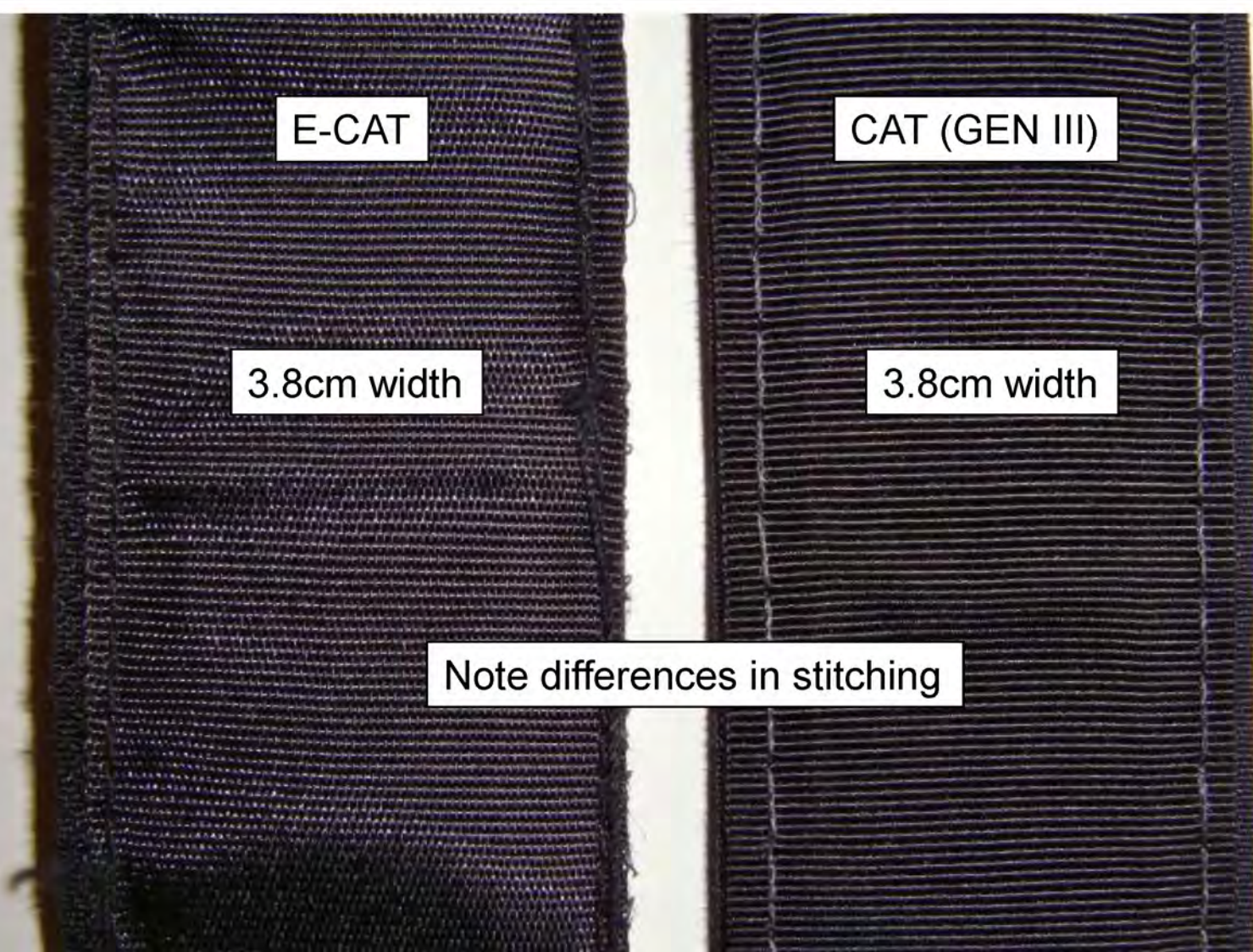
Hook & Loop side

Notice heat-welding marks

Heat welding marks



Stitching Comparison



E-CAT

3.8cm width

CAT (GEN III)

3.8cm width

Note differences in stitching

Stitching Comparison

E-CAT

CAT (GEN III)

Webbing (hook & loop) Windlass Lock



CAT (GEN III) vs. E-CAT

Webbing Comparison

Webbing Compar



Webbing Comparison



E-CAT Packaging



E-CAT Packaging

(Manufacturer)

www.world-element.com

(Nomenclature)

Combat Application Tourniquet

(National Stock Number)

NSN 6515-01-521-7976